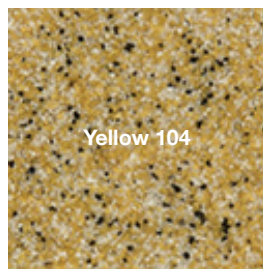
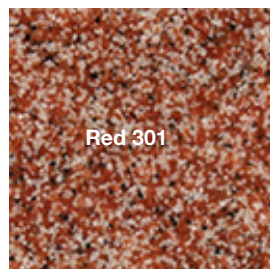
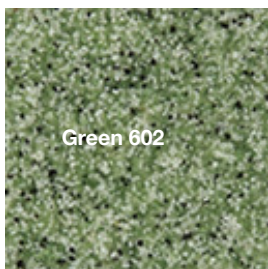
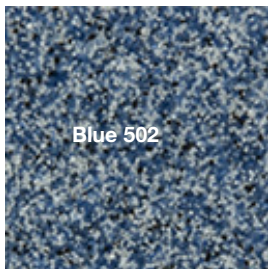


Sector: Commercial Kitchen
Area: 100sqm + cove detail
System: Flowcrete Flowfast Quartz (MMA)
Colour: Dark Grey 703

Quickset resin flooring Ltd has a wealth of experience installing Methyl Methacrylate based resin floors (MMA). For areas that require fast track refurbishment or installation, MMA based resin systems are the number one solution.

We were subcontracted to deliver the Flowcrete Flowfast Quarts MMA system (Classic for Wet Areas) to over 100sqm of a commercial kitchen with cove detail to 100mm high. Existing vinyl was remove, substrate repairs were carried out using a quick curing mortar repair and a full 4mm trowel applied screed was installed. Slip resistance is added by fully broadcasting the surface with quarts and encapsulating with MMA based seal coats.

Other Standard Colours available in this system:



This system is designed:

This hand trowelled, acrylic resin system creates a textured, anti-slip, and chemical resistant satin finish. Thanks to its ability to maintain these properties despite prolonged exposure to liquids, foot traffic and frequent cleaning it has become a popular choice for areas such as showers, changing rooms, kitchens and canteens within busy leisure facilities.