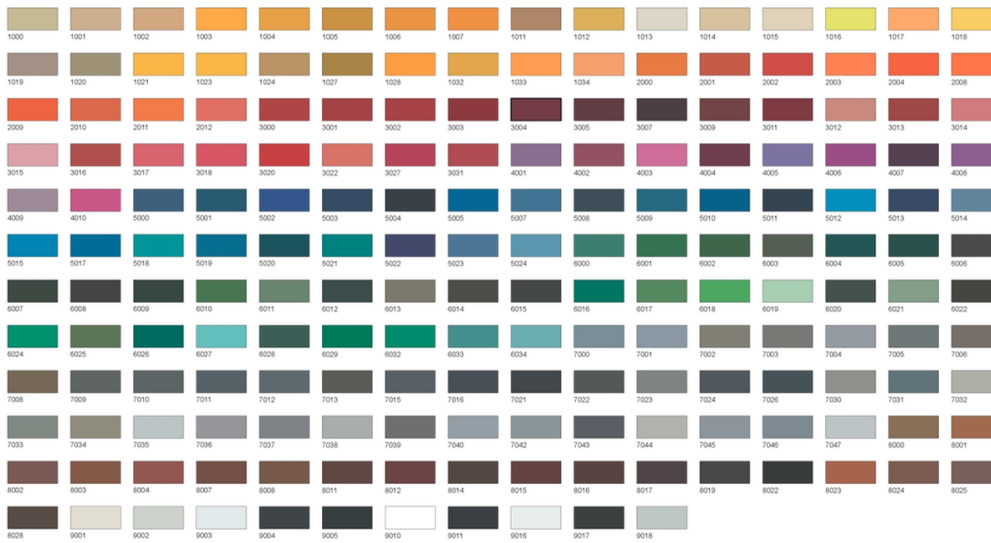


Sector: Engineering
Area: 4,000sqm
System: Arturo EP2500 Self Smoothing 2mm Epoxy
Colour: Various (Light Grey, Mid Grey, Dark Grey and Dark Green)

Quickset resin flooring Ltd were subcontracted along side another well known flooring contractor to install over 4,000sqm of an epoxy self leveller 2-3mm. We fully prepared the substrate to remove existing coatings, primed using Arturo EP6500 epoxy primer and installed the Arturo EP2500 epoxy self smoothing floor and 2mm.

This smooth epoxy system provides excellent impact, wear resistance and chemical resistance. We installed using a slip resistant top coat and completed the work over a 10 day period from start to finish. The project was completed on time and to an extremely high standard.

Other Standard Colours available in this system:



Colours are available from a wide range of options from the RAL chart. Please ask for further details.

This system is designed:
 This Self-smoothing Floor is especially suitable as a finish on floors that are exposed to medium and heavy loads, for example for industrial production facilities, workshops, production areas

