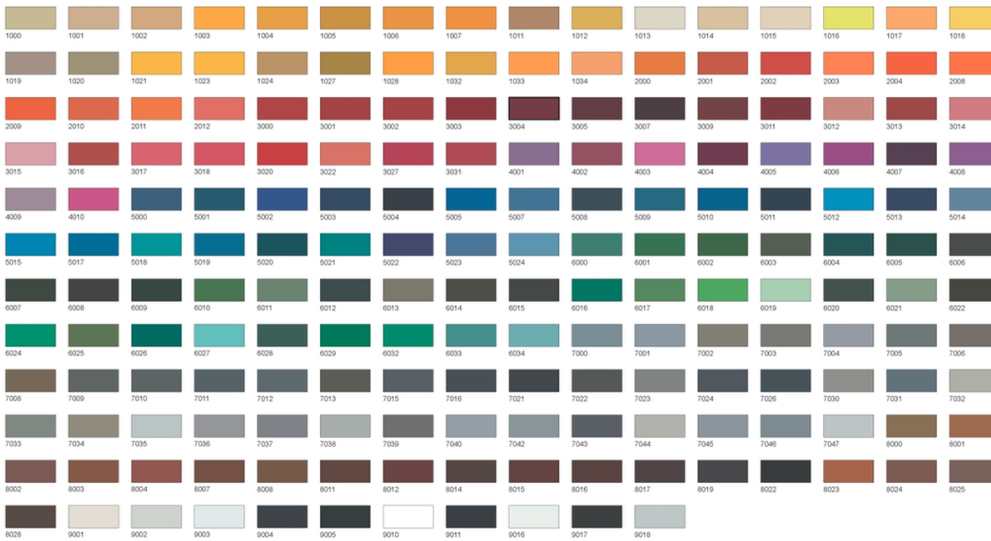


Sector: Engineering
Area: 1,000sqm
System: Arturo EP2500 Self Smoothing
Colour: Light Grey (RAL 7035)

Quickset resin flooring Ltd were subcontracted to install over 1,000sqm of an epoxy self leveller 2-3mm. We fully prepared the substrate to remove existing coatings, primed using Arturo EP6500 epoxy primer and installed the Arturo EP2500 self smoothing floor and 2mm.

This smooth epoxy system provides excellent impact, wear resistance and chemical resistance and is the perfect solution for dry production areas, workshops and engineering space. We can also provide this solution as a slip resistant variant.

Other Standard Colours available in this system:



Colours are available from a wide range of options from the RAL chart. Please ask for further details.

This system is designed: This Self-smoothing Floor is especially suitable as a finish on floors that are exposed to medium and heavy loads, for example for industrial production facilities, workshops, production areas

